

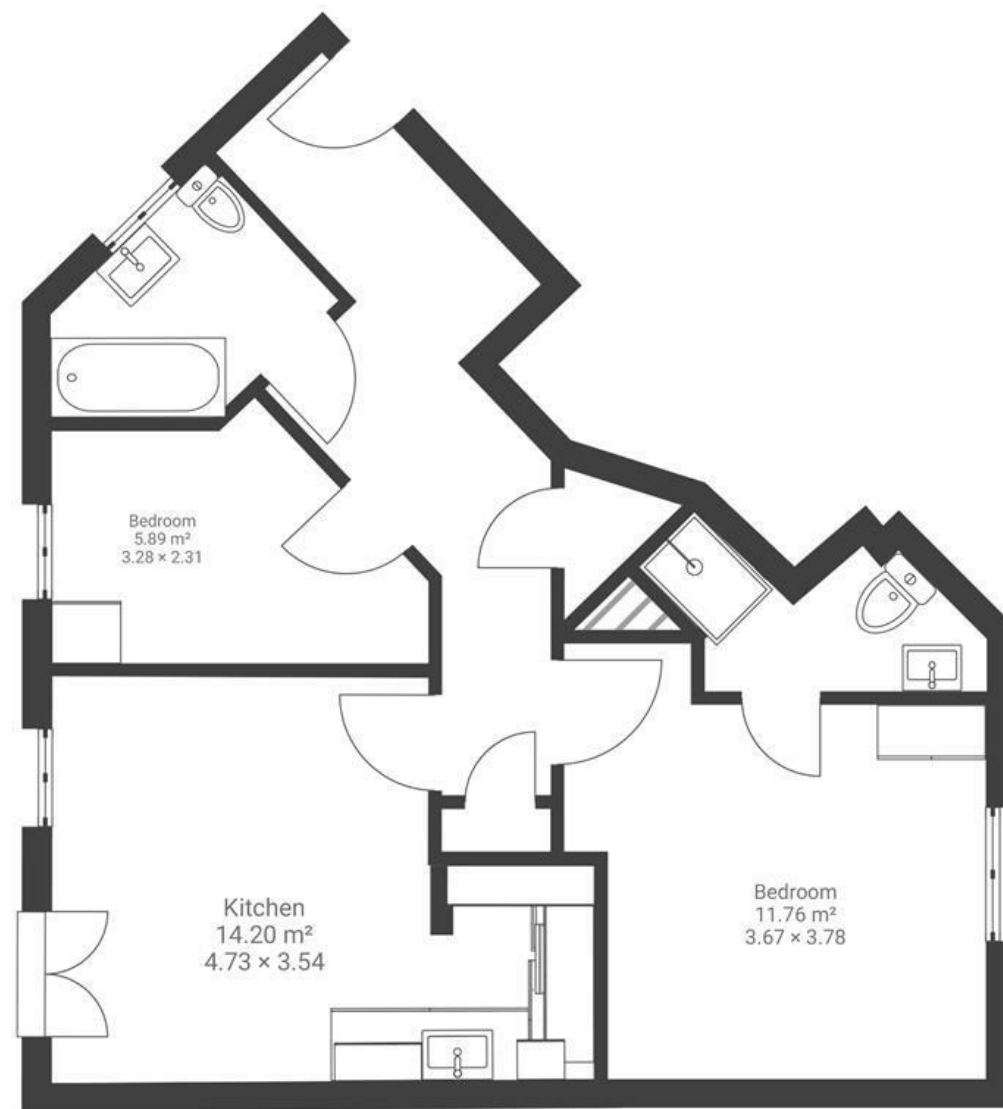
Bartholomew Square

HORFIELD

APPROXIMATE FLOOR AREA
51 SQM / 549 SQFT



THIRD FLOOR



Boardwalk

Bartholomews

HORFIELD, BRISTOL



£240,000



2 Bedrooms



Bristol, BS7



2 Bathrooms

OR

"This is a lovely light and airy flat, warm in winter and full of sunshine. It is in a great location but it is also really quiet. I loved being so close to Horfield Common and Leisure centre/gym and always enjoyed walking down the Gloucester Road, although there is a frequent bus service from the stops by the entrance to the development. There are three good pubs in the immediate area and lots of popular bars and cafes close by."

